

MultiVac 310-MS

MultiVac 610-MS

MultiVac 310-MS-T

MultiVac 610-MS-T

Vacuum Filtration System

Important notice

The instrument shall not be modified in any way. Any modification will void the warranty and may result in potential hazard. We are not responsible for any injury or damage caused by any non-intended purposes and modifying the instrument without authorization.

Unpacking

When unpacking, notice if the package is complete and in good situation. If you find any damage or missing parts, please preserve serial number, shipping carton and contact your dealer for quick solution. Please discard the packing materials according to your local environmental protection policy.

Model	Composition	Q'ty
MultiVac 310-MS	3 Places Aluminum Manifold with 3 pcs x No.8 silicone stopper	x 1



Model	Composition	Q'ty
MultiVac 610-MS	6 Places Aluminum Manifold with 6 pcs x No.8 silicone stopper	x 1



Model	Composition	Q'ty
MultiVac 310-MS-T	3 Places Aluminum Manifold with silicone stopper	x 1
	MF 3, Magnetic Filter Holder 300ml with lid kit	x 3
	Rocker 400, Oil Free Vacuum Pump, AC220V, 50Hz	x 1
	Heavy Duty PP Waste Bottle 4000ml with draining	x 1
	Silicone Tube($\phi 6 \times 12 \text{mm}$), 100cm	x 2



Model	Composition	Q'ty
MultiVac 610-MS-T	6 Places Aluminum Manifold with silicone stopper	x 1
	MF 3, Magnetic Filter Holder 300ml with lid kit	x 6
	Rocker 400, Oil Free Vacuum Pump, AC220V, 50Hz	x 1
	Heavy Duty PP Waste Bottle 4000ml with draining	x 1
	Silicone Tube($\phi 6 \times 12 \text{mm}$), 100cm	x 2





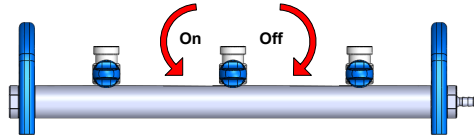
Installation and Operation

Attention :

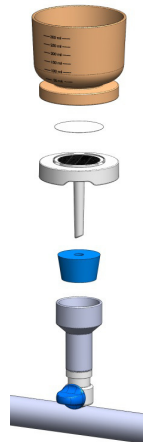
- MultiVac manifold can connect with vacuum pump for the filtration. It is always recommended to install a waste bottle between the manifold and vacuum pump to prevent water from flowing into the vacuum pump.
- The direction of the outlet of MultiVac manifold is interchangeable. You can disassemble the outlet by hand or tool to change the direction into your desired position.

Operation :

- Make sure all valves are off  before use, rotate the valves counterclockwise to up position  for filtration.



- Filter holder installation:
follow the right diagram to install the filter holder



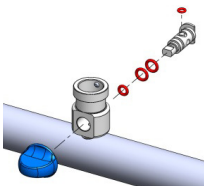
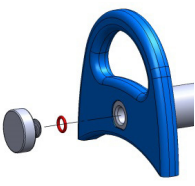
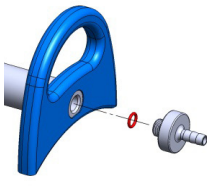
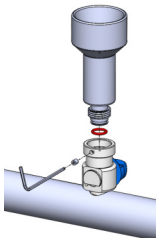
- Vacuum filtration system Installation: follow below diagram to install the system.

Use two silicone tubes to connect the vacuum pump, waste bottle and manifold. Turn on the pump and pour the sample water into the funnel and turn the valve to “up” position to start the filtration.



Maintenance

- Please suck in pure water to clean the tubing after every use.
- MultiVac manifold and waste bottle are autoclavable.
- Silicone tube and O-ring are consumables. Please change the silicone tube and O-ring if you have air leakage problem.

Replace O-ring that locates in the control valve	Replace O-ring that locates in the plug	Replace O-ring that locates in the outlet	Replace O-ring that locates in the support base
			

Ordering Information

180310-01	MultiVac 310-MS, 3 Places Aluminum Manifold with No. 8 stopper x 3
180311-11-T	MultiVac 310-MS-T , Vacuum Filtration System, AC110V, 60Hz
180311-22-T	MultiVac 310-MS-T, Vacuum Filtration System, AC220V, 50Hz
180610-01	MultiVac 610-MS, 6 Places Aluminum Manifold with No. 8 stopper x 6
180611-11-T	MultiVac 610-MS-T , Vacuum Filtration System, AC110V, 60Hz
180611-22-T	MultiVac 610-MS-T, Vacuum Filtration System, AC220V, 50Hz
167103-30	Stainless Steel Filter Holder 300ml
197000-01	LF3, PES Filter Holder 300ml with lid kit
200300-01	MF3, Magnetic Filter Holder 300ml with lid kit
167400-11	Rocker 400, Oil Free Vacuum Pump, AC110V, 60Hz
167400-22	Rocker 400, Oil Free Vacuum Pump, AC220V, 50Hz
167200-48	Heavy Duty PP Waste Bottle 4000ml with draining, autoclavable
167100-20	Type A/ E Glass Fiber Discs, 1 um, 100/PK
167200-38	Silicone Tube(ϕ 6x12mm), 100cm